



# SISTEM ZA RAZVOD TOPLE I HLADNE VODE

HOT AND COLD  
WATER SYSTEM



## Ormar sa centralnim razvodom za toplu i hladnu vodu Preassembled manifolds in recessed box for water system

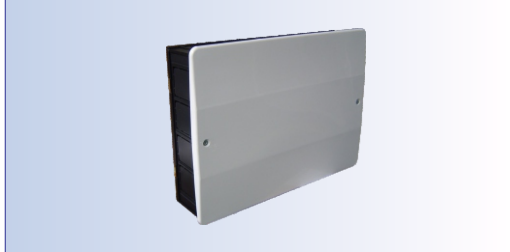


Šifra proizvoda Code	Veličina Size	Pakovanje Pack
99.35.45.2.000	350x450	1

**2 - Kapa / Cap: ABS , Produžetak / Extension: Mesing / Brass ,  
Rozetna / Rossete: ABS**

**Dubina / Depth: 90 mm**

## Plastični razvodni ormar Plastic cabinet for manifolds



Šifra proizvoda Code	Veličina Size	Pakovanje Pack	Težina Weight [kg]
99.35.35.1.000	350x350	1	0,900
99.35.45.1.000	350x450	1	1,150
99.35.55.1.000	350x550	1	1,400

**Dubina / Depth: 90 mm**

## Metalni podesivi razvodni ormar Metal cabinet for manifolds



Šifra proizvoda Code	Veličina Size	Pakovanje Pack	Težina Weight [kg]
99.45.30.0.000	450x300	1	1,800
99.45.40.0.000	450x400	1	2,000
99.45.50.0.000	450x500	1	2,400
99.45.60.0.000	450x600	1	3,000
99.45.70.0.000	450x700	1	3,800
99.45.80.0.000	450x800	1	4,800
99.45.90.0.000	450x900	1	5,500

**Dubina / Depth: 110 - 150 mm**

## Razdelnik za regulaciju 3/4" - 150° - Ø16x2 Regulating manifold 3/4" - 150° - Ø16x2



Šifra proizvoda Code	Veličina Size	Priključak Outlet	Pakovanje Pack	Težina Weight [kg]
62.34.02.9.1C0	3/4"	1/2"xØ16	20	0,348
62.34.03.9.1C0	3/4"	1/2"xØ16	15	0,503
62.34.04.9.1C0	3/4"	1/2"xØ16	10	0,658

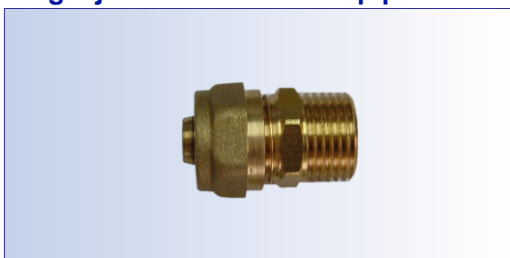
**C - Boja signala / Color signal: (1- plava/blue , 2 - crvena / red)  
2 , 3 , 4 - Broj otvora / Outlets No.**

## Adapter za PERT-OXY cevi Adapter for PERT-OXY pipes



Šifra proizvoda Code	Veličina Size	Priključak Outlet	Pakovanje Pack	Težina Weight [kg]
62.12.16.4.000	Ø16x1/2"	2	300	0,035
62.24.16.4.000	Ø16-24x19	2	200	0,052
62.24.18.4.000	Ø18-24x19	2	200	0,063
62.34.20.4.000	Ø20x3/4"	2	150	0,070
62.34.22.4.000	Ø22-28x1,5	3	150	0,068

## Kompresiona spojnica za PERT-OXY cevi - SN Single joint for PERT-OXY pipes - male



Šifra proizvoda Code	Veličina Size	Priključak Outlet	Pakovanje Pack	Težina Weight [kg]
51.16.12.0.000	Ø16x1/2"	2	200	0,060
51.18.12.0.000	Ø18x1/2"	2	100	0,102
51.20.12.0.000	Ø20x1/2"	2	100	0,118
51.18.34.0.000	Ø18x3/4"	2	100	0,104
51.20.34.0.000	Ø20x3/4"	2	100	0,117
51.22.34.0.000	Ø22x3/4"	3	75	0,135

**Kompresiona spojnica za PERT-OXY cevi - UN**  
Single joint for PERT-OXY pipes - female



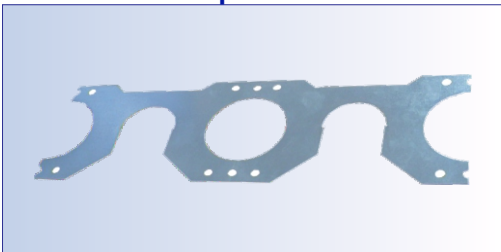
Šifra proizvoda Code	Veličina Size	Priključak Outlet	Pakovanje Pack	Težina Weight [kg]
51.16.12.0.200	Ø16x1/2"	2	200	0,070
51.18.12.0.200	Ø18x1/2"	2	100	0,115
51.20.12.0.200	Ø20x1/2"	2	100	0,132
51.18.34.0.200	Ø18x3/4"	2	100	0,099
51.20.34.0.200	Ø20x3/4"	2	100	0,116
51.22.34.0.200	Ø22x3/4"	3	75	0,138

**Završni element 105° Ø16x2**  
Wall plate elbow 105° Ø16x2



Šifra proizvoda Code	Veličina Size	Zid cevi Thickness	Pakovanje Pack	Težina Weight [kg]
51.16.12.2. <b>200</b>	Ø16x2 - 1/2"	2	50	0,137
51.16.12.2. <b>300</b>	Ø16x2 - 1/2"	2	50	0,137
<b>Boja / Color:</b> <b>200</b> - plava / blue, <b>300</b> - crvena / red				

**Nosač završnog elementa 105°**  
Bracket for wall plate elbow 105°



Šifra proizvoda Code	Veličina Size	Pakovanje Pack	Težina Weight [kg]
51.16.12.1.100	276x81x0,8	100	0,096
<b>Materijal / Material:</b> Pocinkovani čelik / Zinc plated steel			

**Zidni završni element za PERT-OXY cevi**  
Wall plate elbow for PERT-OXY pipes



Šifra proizvoda Code	Veličina Size	Zid cevi Thickness	Pakovanje Pack	Težina Weight [kg]
51.16.12.8.000	Ø16x1/2"	2	100	0,095
51.16.12.8. <b>100</b>	Ø16x1/2"	2	100	0,095
<b>100</b> - Sa izmenjivim adapterom / with exchangeable adapter				

**Zatvarač kolektora - SN**  
Male manifold cap



Šifra proizvoda Code	Veličina Size	Pakovanje Pack	Težina Weight [kg]
95.38.00.0.000	3/8"	300	0,012
95.34.00.0.000	3/4"	200	0,031

**Zatvarač kolektora - UN**  
Female manifold cap



Šifra proizvoda Code	Veličina Size	Pakovanje Pack	Težina Weight [kg]
95.38.00.1.000	3/8"	300	0,011
95.12.00.1.000	1/2"	200	0,022
95.34.00.1.000	3/4"	200	0,029

**Ravno propusni ventil tip PE**  
**Straight stop valve type P**



Šifra proizvoda Code	Veličina Size	Pakovanje Pack	Težina Weight [kg]
10.34. <b>14</b> .3.000	3/4"	50	0,322
10.34. <b>15</b> .3.000	3/4"	50	0,331
<b>14</b> - Sa virblom tip P / With headwork type P			
<b>15</b> - Sa virblom tip D / With headwork type D			

**Virbla 3/4" tip P**  
**Headwork 3/4" type P**



Šifra proizvoda Code	Veličina Size	Pakovanje Pack	Težina Weight [kg]
03.34.07.0.100	3/4"	100	0,089

**Virbla 3/4" tip D**  
**Headwork 3/4" type D**



Šifra proizvoda Code	Veličina Size	Pakovanje Pack	Težina Weight [kg]
03.34.08.1.100	3/4"	100	0,101

**Kapa L50 - M24x1**  
**Plastic valves cap L50 - M24x1**



Šifra proizvoda Code	Veličina Size	Pakovanje Pack	Težina Weight [kg]
03.12.03.5.004	M24x1 - 50	100	0,009

**Materijal / Material:** ABS  
**Površinska zaštita / Surface treatment:** Hromiran / chrome plated

**Kapa plastična L73 - M24x1**  
**Plastic valves cap L73 - M24x1**



Šifra proizvoda Code	Veličina Size	Pakovanje Pack	Težina Weight [kg]
09.12.02.0.000	M24x1 - 73	100	0,029

**Kapa / Cap:** ABS  
**Produžetak / Exstension part:** Mesing/Brass  
**Površinska zaštita / Surface treatment:** Hromiran / chrome plated

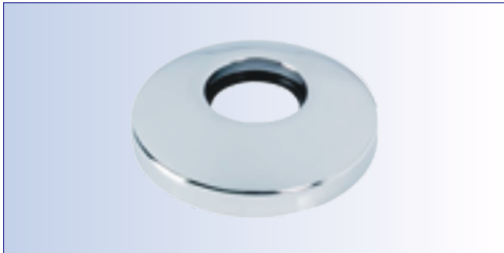
**Produžetak L23 - M24x1**  
**Extension part L23 - M24x1**



Šifra proizvoda Code	Veličina Size	Pakovanje Pack	Težina Weight [kg]
09.12.23.0.000	M24x1 - 23	200	0,020

**Materijal / Material:** Mesing / Brass  
**Površinska zaštita / Surface treatment:** Hromiran / chrome plated

**Rozetna plastična Ø26 - Ø70**  
**Plastic rossete Ø26 - Ø70**



Šifra proizvoda Code	Veličina Size	Pakovanje Pack	Težina [kg] Weight
03.12.03.5.005	Ø26 - Ø70	200	0,010

**Materijal / Material:** ABS

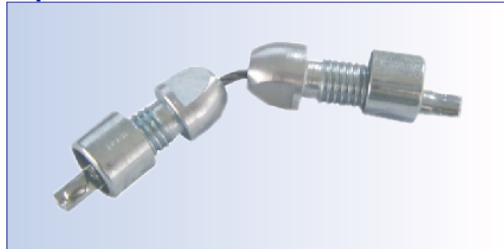
**Površinska zaštita / Surface treatment:** Hromiran / chrome plated

**Kalibrator sa ručicom**  
**Calibrator**



Šifra proizvoda Code	Veličina Size	Zid cevi Thickness	Pakovanje Pack	Težina [kg] Weight
98.16.02.0.000	Ø16x2	2	50	0,150
98.18.02.0.000	Ø18x2	2	50	0,181
98.20.02.0.000	Ø20x2	2	50	0,207
98.22.03.0.000	Ø22x3	3	25	0,247

**Izvlakač cevi**  
**Pipe extractor**



Šifra proizvoda Code	Veličina Size	Pakovanje Pack	Težina [kg] Weight
98.16.02.2.000	Ø16x2	50	0,082
98.18.02.3.000	Ø18x2	50	0,145
98.20.02.4.000	Ø20x2	50	0,161
98.22.03.5.000	Ø22x3	25	0,190

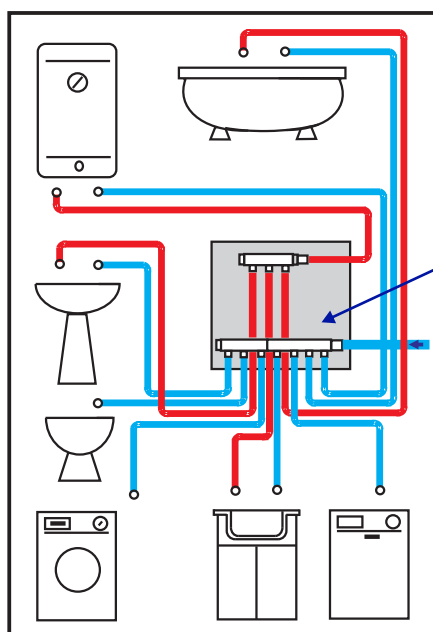
**Materijal / Material:** Č.3990 , Pocinkovan / Zinc plated

**PERT-OXY cev**  
**PERT-OXY pipe**



Šifra proizvoda Code	Veličina Size	Pakovanje Pack	Težina [kg] Weight
98.16.00.0.000	Ø16x2	100	0,090
98.18.00.0.000	Ø18x2	100	0,102
98.20.00.0.000	Ø20x2	100	0,119
98.22.00.0.000	Ø22x3	100	0,177

**Šema sistema za razvoda tople i hladne vode /Scheme of hot and cold water system**



**Orman za centralni razvod tople i hladne sanitarne vode je namontiran i ispitivan u fabrici i isporučuje se spreman za ugradnju u zid. Sistem se sastoji od ugradnog plastičnog ormarića sa plastičnim poklopcem u beloj boji, razdelnika sa brojem otvora po zahtevu kupca, 2 čepa, 2 propusna ventila sa holenderom i nadgradnjom i 2 kompresione poluspajnice Ø18x2. Zatvaranje i otvaranje vode može se vršiti bez skidanja poklopca ormarića zahvaljujući ugrađenim propusnim ventilima čija se vretena nalaze izvan poklopca i zaštićena su ukrasnom kapom.**

Preassembled manifolds in recessed box for water system is system tested in our facility and ready to be installed into the wall. System consists of recessed plastic box with white plastic cover, manifolds with customised number of outlets, 2 manifold caps, 2 pcs of straight stop valves in size 3/4" with brass couplings and upgradings and 2 pcs adapters for Pert-Oxy Ø18x2. Water flow can be controlled without removing plastic cover from the box as spindles from straight stop valves are located out of the box and protected with plastic cap.

**Komak-M d.o.o. - ul. T. Đorđevića bb, 18220 Aleksinac, Srbija**  
**Tel/fax: 381 18 800 225**  
**e-mail: [info@komak-m.com](mailto:info@komak-m.com) \* <http://www.komak-m.com>**

